

WELCOME TO THE DARWIN CHORALE

The Chorale welcomes anyone who loves to sing regardless of experience.

The Chorale performs in a variety of genres - classical to contemporary – requiems to cabarets, Beethoven to the Beatles! 2 classical performances and one cabaret make up the 2019 program. Rehearsals focus on: learning the songs and music that will be performed; learning about music and singing; the enjoyment of singing together.

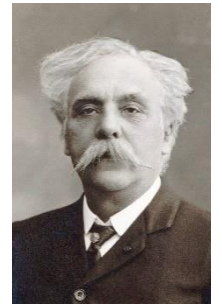
THE 2019 PROGRAM

14th April - Fauré's Requiem

Music Director - Digby Barrow Venue - Christ Church Anglican Cathedral.

Fauré's Requiem and other sacred choral works will feature in the program.

Gabriel Fauré composed his Requiem in D minor, Op. 48, between 1887 and 1890. The choral-orchestral setting of the shortened Catholic Mass for the Dead in Latin is the best-known of his large works. Its focus is on eternal rest and consolation. Fauré wrote, 'Everything I managed to entertain by way of religious illusion I put into my Requiem, which moreover is dominated from beginning to end by a very human feeling of faith in eternal rest.'



25th, 26th and 27th July - No 1 Hits (1950 to 2010)

Music Director – Greg Anderson Venue - Studio Theatre, Darwin Entertainment Centre

A cabaret style performance of Number 1 Hits (pop) through the decades which will appeal to all generations. Fun filled performances which will involve the choir in some books down singing as well as movement.

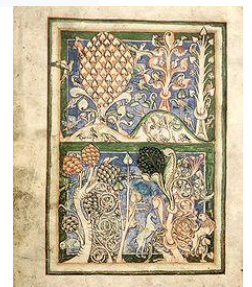


7th December - Carmina Burana

Music Director - Jonathon Tooby Venue – TBC

The Chorale joins the Darwin Symphony Orchestra for *Carmina Burana*. Jonathon Tooby, Artistic Director/ Chief Conductor of the DSO will be conducting the performance with rehearsal conductors for the Chorale, Nora Lewis and Vivienne Tooms.

Carl Orff's *Carmina Burana* is one of the most frequently performed choral work of the 21st century. *Carmina Burana* translates as Songs of Beuren which refers to a collection of early 13th-century songs and poems that was discovered in Beuren in 1803. With the help of Michael Hofmann, law student and Latin scholar, Orff chose 24 songs and set them to music in what he termed a 'scenic cantata'.



Community Events

Along with the major concerts the Chorale is invited to perform at community events, such as the Bombing of Darwin, ANZAC Day, Police Remembrance Day service, Government House and Darwin Markets performances etc. Although the performances are usually short and our lead up time minimal, it is important to treat them with the same dedication and commitment to the music as we do for major performances. These events often provide us with our largest audiences and the opportunity to showcase the Chorale to the wider community.

REHEARSALS and ATTENDANCE

Rehearsals take place on Wednesday evenings from 7.30pm – 10.00pm in the Performance Room, Orange Building 6, at Charles Darwin University. Some additional rehearsals may be scheduled closer to the performance date. These are usually held on Sundays (during the day) and/or Monday evenings. **It is expected that choir members attend 80% of rehearsals and be available for the week of and the week prior to the performance.** If you are unable to attend 80% of rehearsals your participation in a concert will be at the discretion of the Music Director and Performance Manager. Attendance at the first rehearsal should also be a priority as music is distributed, solos and small groups may be allocated and information given regarding rehearsals and the concert. A rehearsal schedule is issued by the performance Committee 2 weeks prior to the commencement of rehearsals for a major performance. **Rehearsal schedules for Community Event performances will vary depending on the performance however, if wishing to perform, it is essential that you do attend the required number of rehearsals leading up to the event.**

MUSIC LOAN & CARE

Music is loaned to choir members after the membership and rehearsal fees (major concerts) have been paid. Potential members will be given music to use in rehearsals (red folder) but will not be permitted to take this for home practice until the membership and rehearsal fee has been paid.

All Music, including photocopied sheets, is be returned after the concert/show or on the last day of rehearsing if not performing in the concert. Music for performances is a considerable cost to the Chorale. Photocopied sheets are downloaded from online music stores usually at \$2 to \$5 a copy. Copyright laws legislate against photocopying what has been downloaded or purchased.

2B or 3B pencils only may be used to mark the music during rehearsals. No pens, highlighters or HB pencils are to be used as all markings need to be erased before they are returned to the librarian.

Individual chorale members are responsible for the care and return of the music. You will be invoiced for music not returned or damaged.

JOINING THE CHORALE

Potential members are welcome to 'sit in' for part or all of a Chorale rehearsal to meet members and get an idea of how the Chorale operates. You may attend a couple of rehearsals prior to signing up as a member however we do encourage members to join within the first 2 or 3 weeks of attendance as there will be restrictions on taking home music to practise. Membership also ensures accident insurance coverage.

Membership Fee

All members are required to pay an annual membership fee which, for 2019, is \$80.00. The Membership fee goes towards paying insurance for members while rehearsing and performing, membership to associated choir bodies, rental on sheds and rooms for storage of our assets, etc.

Membership entitles you to rehearse for, and perform with, the Chorale at the Community events provided you have completed an audition. If you only wish to sing in community events, then the membership fee is all you need to pay. Membership also entitles you to receive members' emails, *Head Notes* (Chorale newsletter) and access the members only area of our website.

Rehearsal Fees

Payment of the Rehearsal fee of \$75.00 per performance entitles singing members to rehearse and perform in a major performance. The rehearsal and performance fees go towards covering some of

the cost of purchasing, hiring or photocopying music for your use at rehearsals and concerts, refreshments, engaging a Music Director, rehearsal pianist, accompanying musicians, venue hire and other production costs.

Talent Release

Singing members are required to complete the Membership Application form and the Talent Release form for 2019. The Talent Release form gives the Chorale permission to use photographs and film footage for marketing, publicity, programs, webpage, Facebook, etc. Major concerts are photographed and filmed thus if you do not agree with the terms this may restrict you to community performances only. Photos placed on social media by the Chorale will appear on the chorale website and official Facebook page. Although we ask members to be sensitive and respectful to other members in their postings, we cannot control what members place on their private pages.

Audition

During the first few weeks of joining the Music Director will hear you sing to ensure that you are placed in the appropriate section of the Chorale – Soprano, Alto, Tenor or Bass. This is usually done in small groups.

The application forms for *Membership, Performance and Rehearsal fees, Talent Release* are attached. Membership payment may be made prior to our commencement date but please remember to include a reference, eg your surname, when making EFT payments. We no longer have bankcard facilities so if paying at rehearsal bring the correct money as we do not carry change. The completed forms can be given to the Registrar, Sheila Delahay or emailed to sheila.delahay@gmail.com.

CHORALE UNIFORMS



Formal Uniform



Informal Uniform

For most concerts, you will be required to wear the Chorale Uniform. The current uniforms are pictured above. Members pay for their own top/shirt. You will be given details of the suppliers of the formal uniform top/ shirt and informal uniform shirt /top when you join the Chorale. Members are required to provide their own long black pants and closed in black shoes with stocking / socks.

The formal uniform is worn for more traditional choral concerts. The informal uniform is usually worn at community events and less formal performances. The informal uniform is no longer available from suppliers and the performance manager will advise members, who do not have a suitable uniform shirt, what is suitable to wear. The Chorale provides costumes appropriate to the theme for cabarets and musicals.

THE CHORALE NEWSLETTER - HEAD NOTES.

Head Notes includes reports from Board and Committee behind the scenes. The Music Director writes articles about the music we are performing and choral music/singing in general to broaden our knowledge about being in a choir.

Two members of the Chorale are profiled - it is always interesting to learn more about the backgrounds of our members. Members are encouraged to contribute!



BOARD and PERFORMANCE COMMITTEE



The Darwin Chorale Board sets the strategic direction of the Chorale. The AGM is usually held in the first quarter of each year. Members will be advised of vacant positions on the 2019 Board and the skills that the Board are looking for from potential Board members. If you are keen to support the Chorale consider nominating for a position.

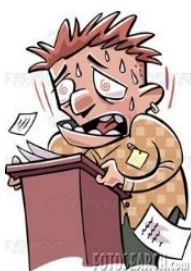
The Performance Committee is the team involved in organising the production of a show/performance. There is a Production Team for each performance. Depending upon the type of show the roles on this team may include the following: production manager, artistic director, conductor/s, choreographer, set designer, librarian, stage manager, costume organiser, publicity/marketing coordinator, lighting and sound technicians, program producer, front of house organiser, budget coordinator, performer support (food beverages/ after show party!)

We rely on ticket sales, sponsorship and grants to be able to produce a concert. Costs vary between \$20,000 and \$50,000 or upward depending upon the type of show being produced. The Board and other members of the Chorale continue to work tirelessly to secure funding, so we are able to produce quality concerts throughout the year.

There are many areas to consider when putting on a show. We encourage members to take the opportunity to volunteer for a role with the Production Team. The commitment is generally 10 -12 weeks depending on the concert. There will be meetings relating to the performance and you will be guided and supported by the Performance Committee. You do not need to be a singing member to be involved in the Production Team. If you have a passion/skill in a particular area or just wish to be involved, please let the Performance Manager know.

Being involved in a choir is fun and good for your health!

We Look forward to you joining us!



BEFORE



AFTER